

National Centre For Quality Calibration

NABL Accredited Instrument Calibration Laboratory

NCQC is striving for "Precision" and "Reliability"

National Centre For Quality Calibration (NCQC), is incorporated in 1998 by Mr. Devang Jhaveri. NCQC has infrastructure in terms of precise and sophisticated masters, skill personnel (B.E., MBA) and controlled environment condition as per NABL requirements. NCQC is ISO/IEC 17025:2005 accredited since 2000 by NABL (Department of Science and Technology) for dimensional, thermal, pressure, electro - technical parameters.



Precision Calibration Centre provides National / International Traceability for Temperature, Force, Dimensional, Validation, Pressure, Vacuum, Time, Mass, Electrical, Noise, Airflow, Lux, Humidity, Analytical Instruments, Laboratory Equipments & all Special Purpose Instruments in all ranges.

THE STRENGTH OF NCQC

Numbers of instruments calibrated so far
1,50,000 Approx.

Numbers of companies have used our services
25,000 Approx.

NATIONAL CENTRE FOR QUALITY CALIBRATION

ISO/IEC 17025 (NABL) ACCREDITED INSTRUMENT CALIBRATION LABORATORY

4, Abhishree Corporate Park, Near Swagat Bungalow BRTS,
Iskcon - Ambli Road, Ambli, Ahmedabad - 380 058

Ph. +91 79 29795322, 29795323 • M. +91 93270 17517

E-mail : ncqc@calibrationlaboratory.in

OUR BRANCHES

ANKLESHWAR • BHAVNAGAR • GANDHIDHAM • RAJKOT • VAPI



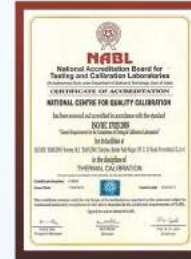
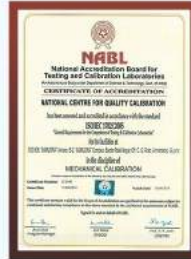
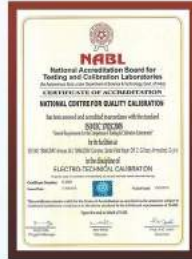
Since 1998

www.calibrationlaboratory.in

National Centre For Quality Calibration

NABL Accredited Instrument Calibration Laboratory

NCQC is striving for "Precision" and "Reliability"



For detailed scope of our accreditation at permanent facility and at site, visit NABL website: www.nabl-india.org

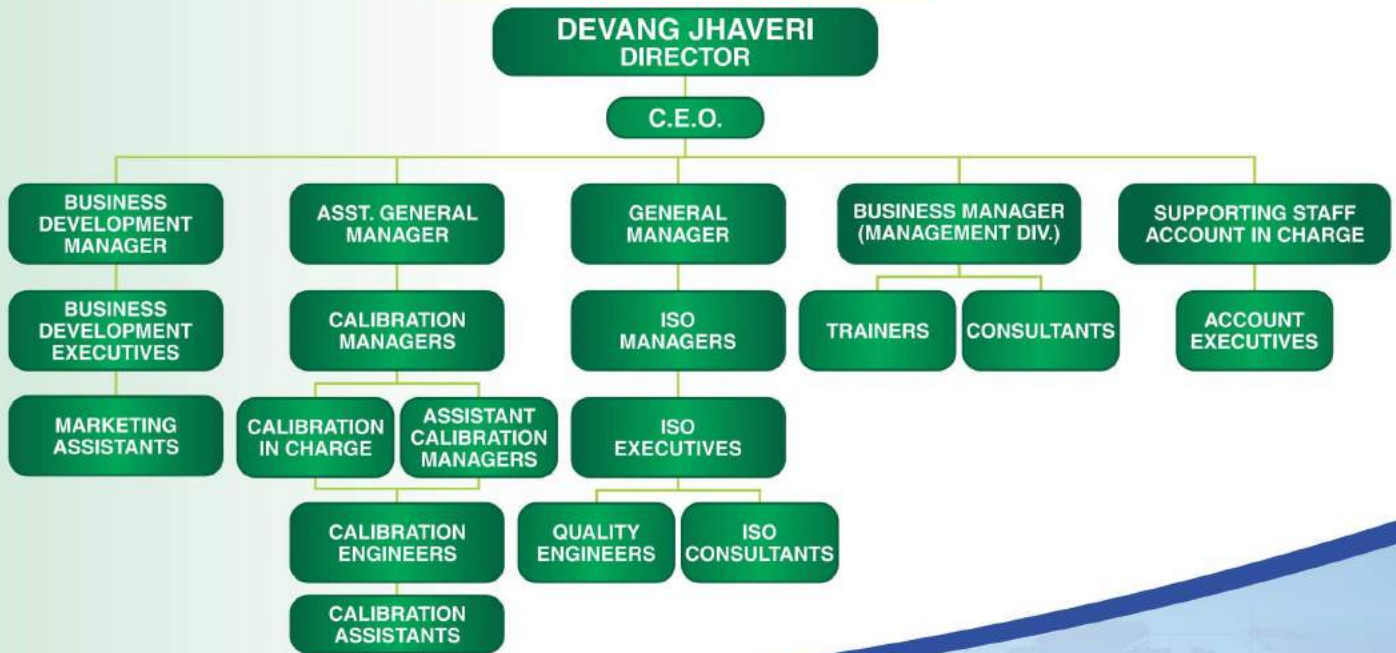
Facilities Available

- Highly sophisticated costly master instruments to serve needs of calibration.
- Full-fledged facilities for calibration of the instruments related to temperature, pressure, vacuum, time, mass, linear measurement and electrical instruments.
- Dust free, vibration proof, properly illuminated, temperature and humidity etc., are maintained to control environment in the standard room.
- Well experienced technical persons mainly engineers in the different disciplines.

Instrument calibration with National/International traceability certificate for..

Mechanical	Length, Angle, Volume, Density, Pressure, Vacuum, Sound, pressure calibrator, pressure gauges, test sieves, recorder, transmitter etc.
Electrical	AC/DC Current, AC/Dc Voltage, Resistance, Capacitance, Time, Speed, Frequency, Power, transmitter; energy meter, power factor meter etc.
Thermal	Temperature & Relative Humidity (RH), thermometer, temperature calibrators, thermocouple, furnace, ovens, Hygrometers, humidity sensor, glass thermometer, digital thermometer, RTD sensor, Pt-100 sensor etc.
Process	pH, Conductivity, ORP etc.
Force	Torque, Compression, Tension, Hardness testing machine, torque wrenches, Compression testing machine, universal tensile testing machine, screw drivers etc.
Special Purpose	Flow meter, multi function calibrator, time, mapping, validation, lux meter, anemometer etc.
Mass	Weights, weighing balance, calibration of pipette, glass wares, glass wares, analytical weights etc.
Mapping / Validation	Warehouse, Store room, Dispatch room, Furnaces, Muffle furnace, BOD Incubator, Environmental chamber, Humidity chamber, Humidity, Temperature etc.
Laboratory Instruments	Oven, BOD incubator, Incubator, Weighing balance, Weight box, Weights, COD, Water bath, Freeze, Freezer, Deep Freezer, Autoclave, Microscope, Glass wares, Pipette, Burette, Measuring cylinder, Centrifuge, Micro pipette, Test sieve, Data logger, Thermo-Hygrometer, Humidity controller, Humidity chamber, Vernier caliper, Dial Vernier caliper etc.

OUR ORGANIZATION STRUCTURE



OUR CLIENTS

WE HAD CLIENTS IN ALL TYPES OF INDUSTRIES & SERVICE SECTORS IN INDIA AND GLOBALLY.

- ☞ CHEMICAL PROCESS HOUSE
- ☞ TRANSMISSION TOWERS
- ☞ SOFTWARE & AUTOMATION SYSTEM
- ☞ AUTOMOBILE COMPONENTS
- ☞ CEMENT, FOOD INDUSTRIES
- ☞ GOVERNMENT ORGANIZATIONS
- ☞ CIVIL CONSTRUCTION, HOSPITALS
- ☞ SERVICE SECTOR AND TRADERS
- ☞ POWER PLANTS, STEEL PLANTS
- ☞ COLLEGES AND SCHOOLS
- ☞ DIAMOND & JEWELERS
- ☞ PETROLEUM REFINERY AND GAS SECTOR
- ☞ CONSTRUCTION AND INFRASTRUCTURE
- ☞ ALL TYPES OF LABORATORIES, PHARMACEUTICAL
- ☞ MACHINE MANUFACTURE (PLASTIC, TEXTILES, PHARMA)
- ☞ ENGINEERING (VALVES, PUMPS, MOTORS, BEARINGS, ROLLERS)
- ☞ INSTRUMENTATION
(PRESSURE GAUGES & ELECTRONICS MEASURING INSTRUMENTS)
- ☞ TEXTILE (FABRICS, DENIM, TOWELS, SUITING, FILAMENT YARN)
- ☞ CHEMICALS, DYESTUFF, INTERMEDIATES & PIGMENTS
- ☞ OIL MANUFACTURE, ELECTRONICS
- ☞ TELEPHONE CABLES



Since 1998

4, Abhishree Corporate Park,
Near Swagat Bungalow BRTS,
Iskcon - Ambli Road, Ambli
Ahmedabad - 380 058. INDIA

Ph.: +91 79 29795322 / 29795323,
Mobile: +91 98250 31523

Email: sales@globalmanagergroup.com
sales@punyam.com